



# GAT MONTHLY MEMBERSHIP PROGRESS REPORT

Results as of: 3/31/2023

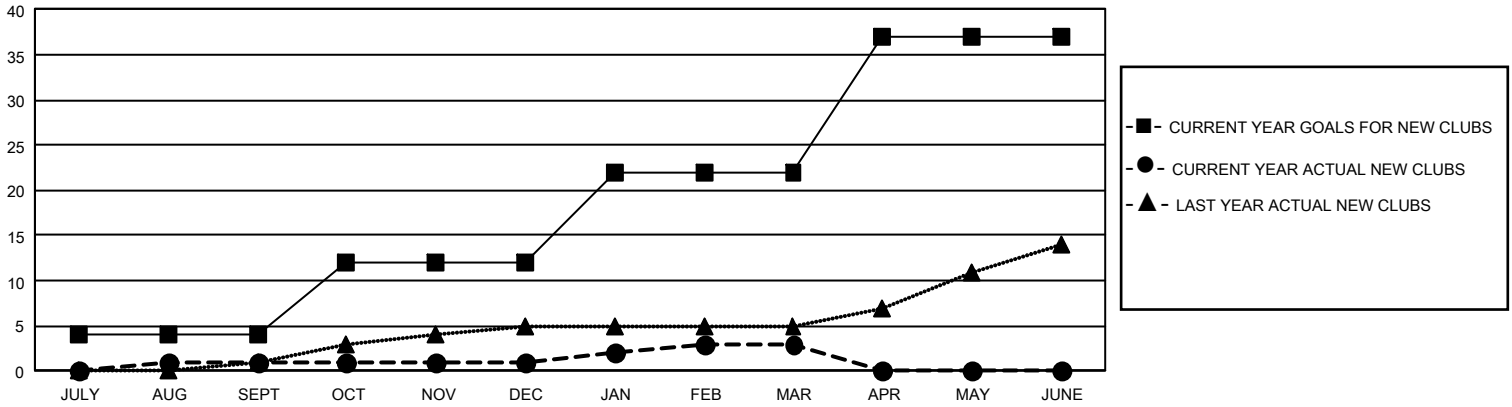
## GMT Constitutional Area 4, Group D

REPORT DOES NOT INCLUDE CLUBS IN UNDISTRICTED AREAS.

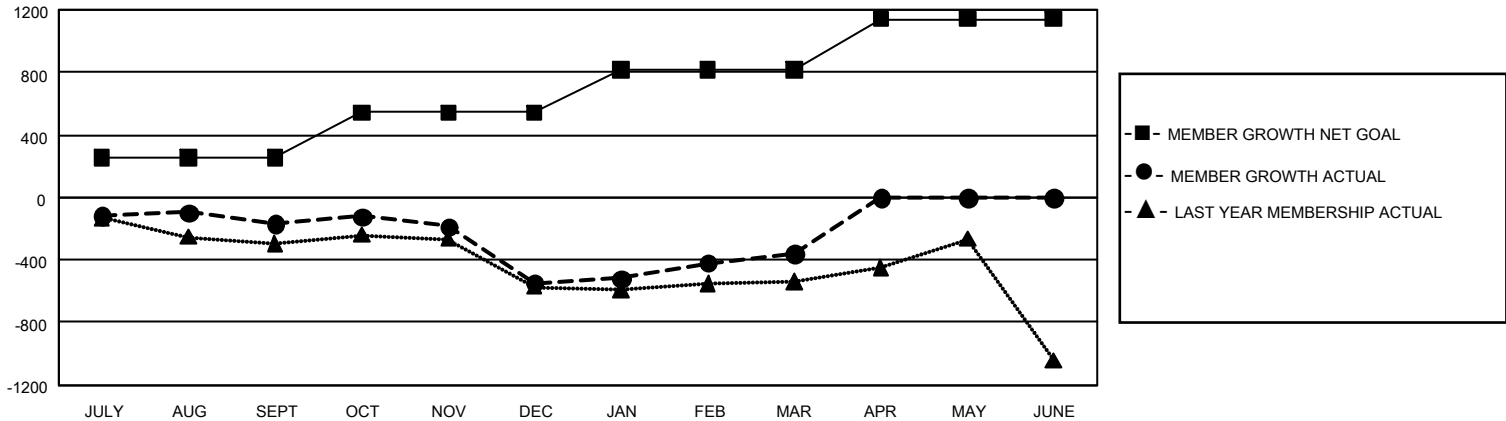
Clubs			
RESULTS FOR 2022-2023			
QUARTER	NEW CLUB GOAL	NEW CLUBS	DROPPED CLUBS
JULY/AUG/SEPT	12	1	15
OCT/NOV/DEC	24	0	11
JAN/FEB/MAR	30	2	8
APR/MAY/JUNE	45	0	0

Members			
RESULTS FOR 2022-2023			
QUARTER	MEMBER GROWTH NET GOAL	MEMBER GROWTH ACTUAL	DROPPED MEMBERS ACTUAL (including transfers)
JULY/AUG/SEPT	256	453	547
OCT/NOV/DEC	286	563	882
JAN/FEB/MAR	276	798	510
APR/MAY/JUNE	324	0	0

GOALS AND ACTUAL NEW CLUBS CUMULATIVE



GOALS AND ACTUAL MEMBERS CUMULATIVE



<b>DROPPED CLUBS: 34</b>	627 CLUBS OF 1,400 ADDED 1 OR MORE NEW MEMBERS	<b>GENDER DISTRIBUTION</b>	
		MALE 19,323 (68.84%) FEMALE 8,739 (31.14%) NON BINARY 1 (0.00%) PREFER NOT TO ANSWER 5 (0.02%)	
<b>DROPPED MEMBERS</b>		<a href="#">CLICK HERE FOR CUMULATIVE MEMBERSHIP DATA</a>	
DECEASED 236 CLUB CANCELLED 108 OTHER 1,594 <b>TOTAL 1,938</b>	TOTAL FAMILY UNIT MEMBERS 2,717 FAMILY MEMBERS PAYING HALF DUES 1,400		